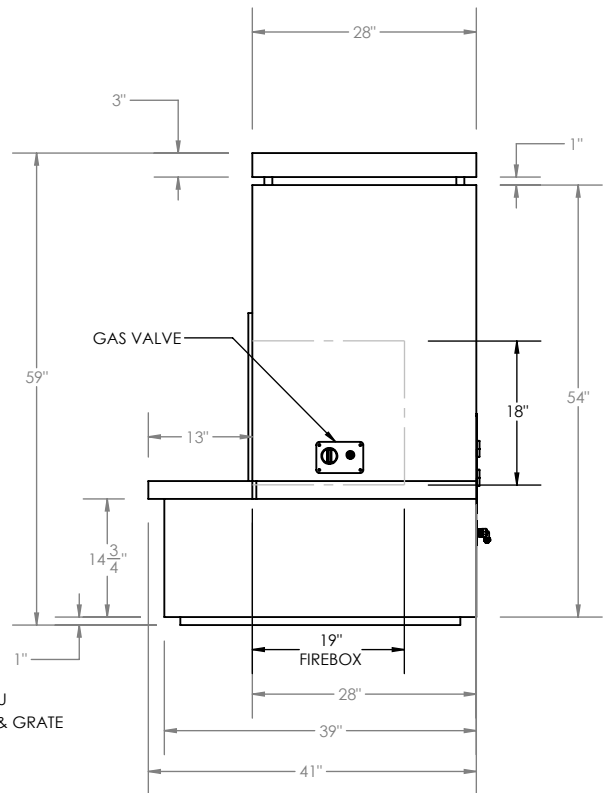
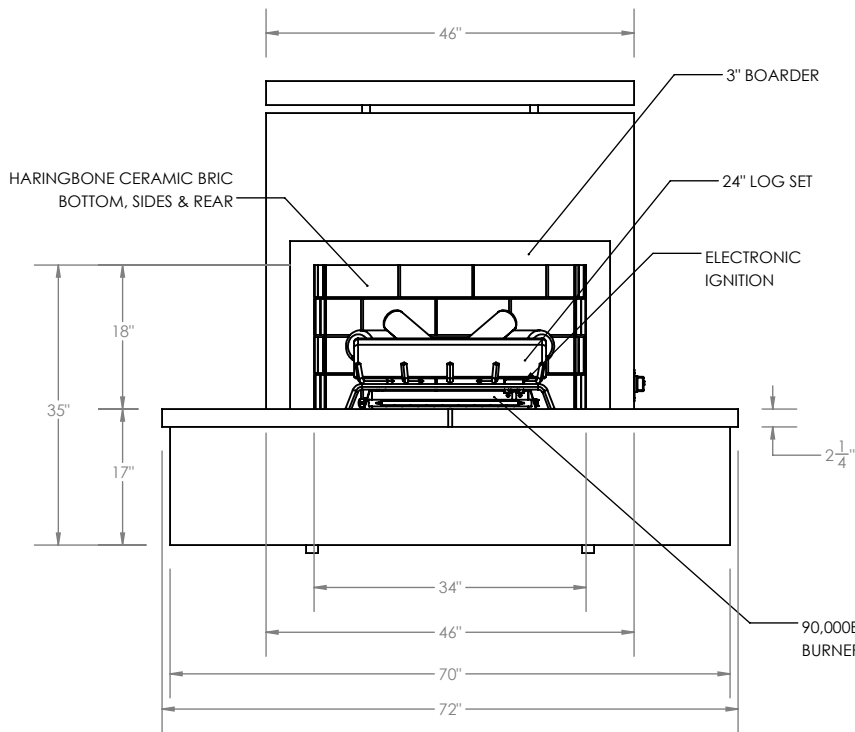
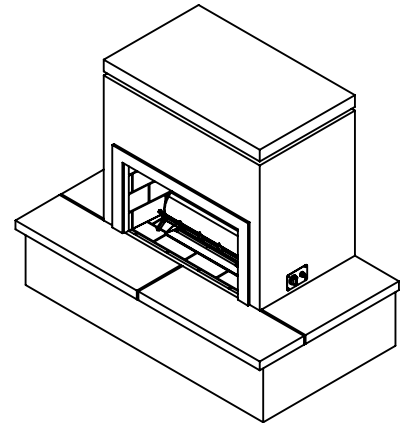
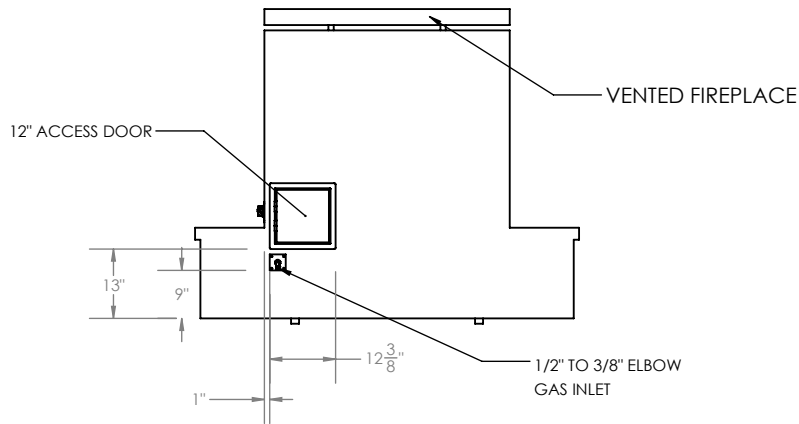






FIREPLACE

SAHARA

901-3



STANDARD FEATURES		
QTY.	SYMB.	DESCRIPTION
-	A	STUCCO
1	B	22" DOUBLE BURNER 90,000 BTU w/ BUILT-IN 24" LOG GRATE
-	C	8 PIECE, 24" WEATHERED OAK LOG SET
-	D	LP GAS NG CONVERTIBLE
-	E	VENTED FIREPLACE

<div></div> <div>CAL FLAME BBQ INC. 1462 EAST NINTH STREET, POMONA, CA 91766</div> <div>PROPRIETARY AND CONFIDENTIAL</div> <div>THE INFORMATION CONTAINED IN THIS DRAWING IS THE SOLE PROPERTY OF CAL FLAME. ANY REPRODUCTION IN PART OR AS A WHOLE WITHOUT THE WRITTEN PERMISSION OF CAL FLAME IS PROHIBITED.</div>	UNLESS OTHERWISE SPECIFIED:		LINE		CAL FLAME									
	DIMENSIONS ARE IN INCHES		<div>1/2"</div> <div>2°</div> <div>.05</div> <div>.015</div>		SERIES		SAHARA							
	TOLERANCES:				NUM		901-3							
	FRACTIONAL:				SIZE		A		DWG NO.		REV		A	
	ANGULAR:				SCALE: 1:24		SHEET 1 OF 1							
TWO PLACE DECIMAL:		THIRD ANGLE PROJECTION												
THREE PLACE DECIMAL:		<div></div>												
		INTERPRET GEOMETRIC TOLERANCING PER: ASME Y 14.5												
		DO NOT SCALE DRAWING												