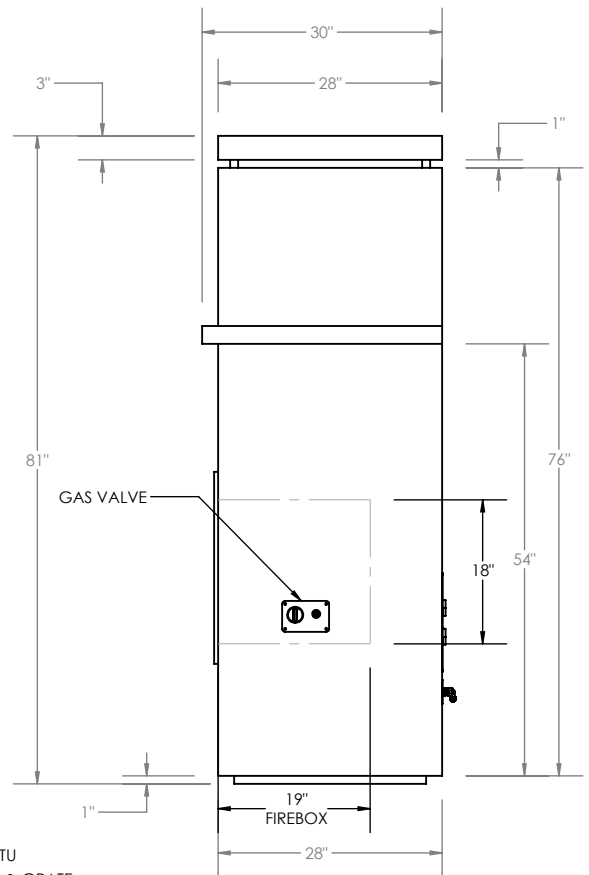
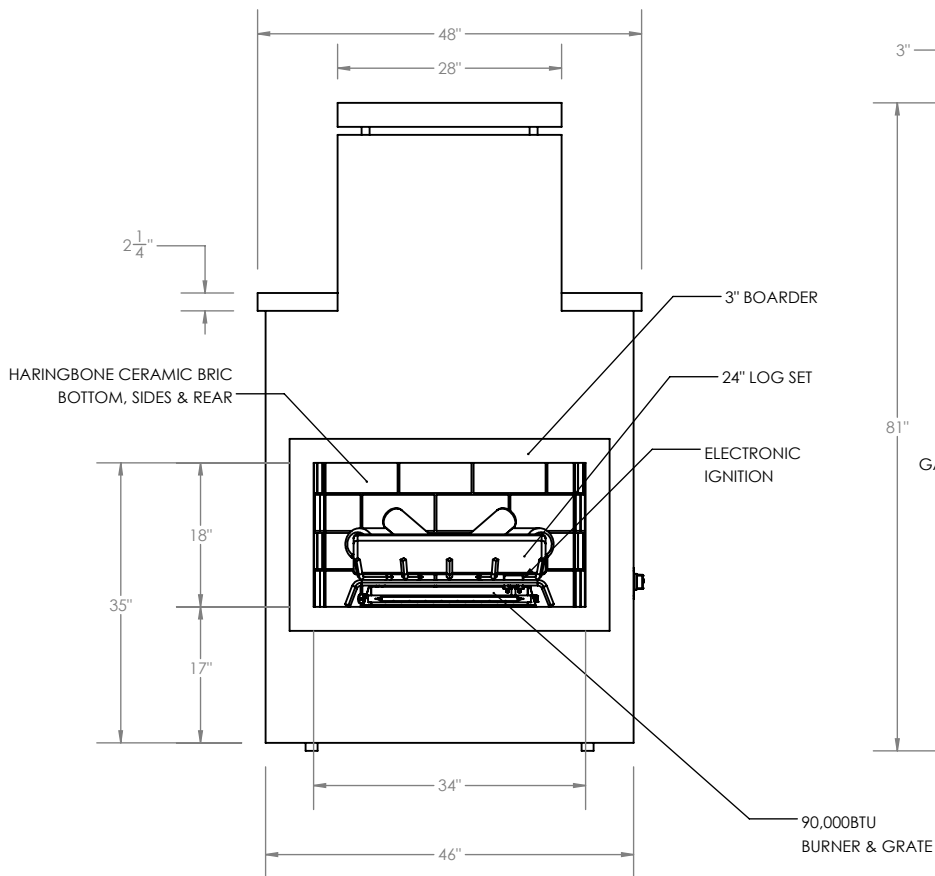
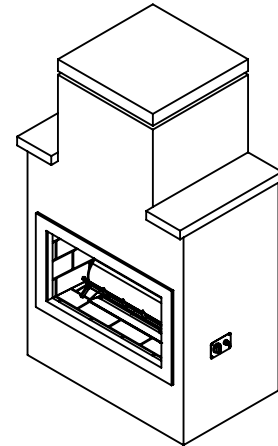
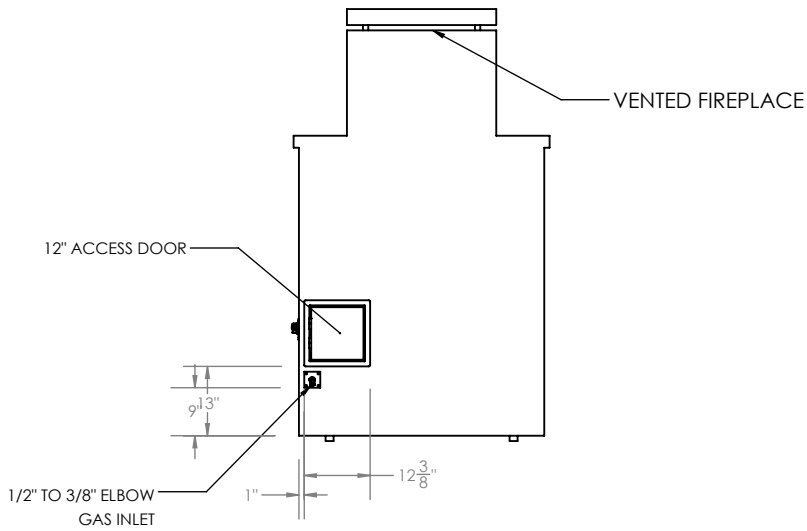






# FIREPLACE

# INDIO

903-1



STANDARD FEATURES		
QTY.	SYMB.	DESCRIPTION
-	A	STUCCO
1	B	22" DOUBLE BURNER 90,000 BTU w/ BUILT-IN 24" LOG GRATE
-	C	8 PIECE, 24" WEATHERED OAK LOG SET
-	D	LP GAS NG CONVERTIBLE
-	E	VENTED FIREPLACE

  CAL FLAME BBQ INC. 1462 EAST NINTH STREET, POMONA, CA 91766  <b>PROPRIETARY AND CONFIDENTIAL</b>  THE INFORMATION CONTAINED IN THIS DRAWING IS THE SOLE PROPERTY OF CAL FLAME. ANY REPRODUCTION IN PART OR AS A WHOLE WITHOUT THE WRITTEN PERMISSION OF CAL FLAME IS PROHIBITED.	UNLESS OTHERWISE SPECIFIED:  DIMENSIONS ARE IN INCHES TOLERANCES: FRACTIONAL: ±1/2" ANGULAR: ± 2° TWO PLACE DECIMAL: ±.05 THREE PLACE DECIMAL: ±.015  THIRD ANGLE PROJECTION   INTERPRET GEOMETRIC TOLERANCING PER: ASME Y 14.5  DO NOT SCALE DRAWING		LINE	CAL FLAME	
	SERIES	INDIO			
	NUM	903-1			
	SIZE	A	DWG NO.	REV	A
	SCALE: 1:24	SHEET 1 OF 1			